

APP CRS	Rwy Idg	<b>6869</b>
<b>184°</b>	THRE	<b>12</b>
	Apt Elev	<b>15</b>

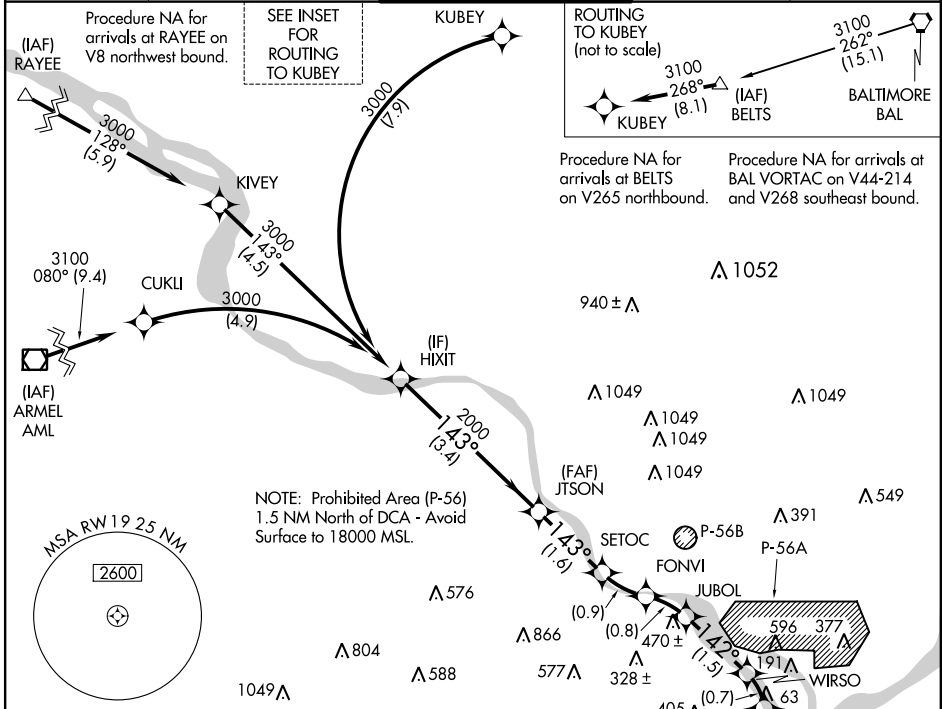
# RNAV (RNP) RWY 19

## WASHINGTON/ RONALD REAGAN WASHINGTON NATIONAL (DCA)

**▼** For uncompensated Baro-VNAV systems, procedure NA below -10°C (14°F) or above 54°C (130°F). Inop table does not apply. RF and GPS required. When VGSI inop, procedure NA.

**MALSF** MISSED APPROACH: Climb on the final approach track to RW19 then direct BADDN to 1600 and hold.

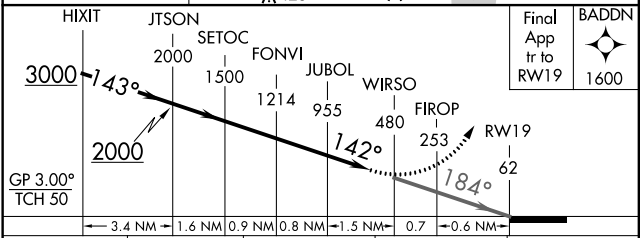
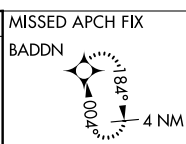
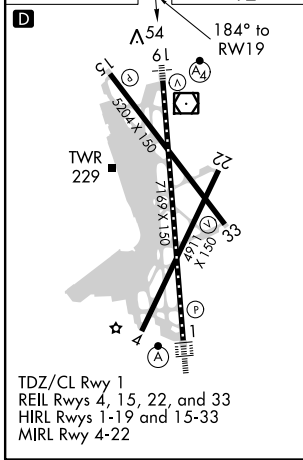
ATIS <b>132.65</b>	POTOMAC APP CON <b>124.7 338.2</b>	WASHINGTON TOWER <b>119.1 257.6</b>	GND CON <b>121.7 257.6</b>	CLNC DEL <b>128.25</b>
-----------------------	---------------------------------------	--	-------------------------------	---------------------------



NE-3, 03 APR 2014 to 01 MAY 2014

NE-3, 03 APR 2014 to 01 MAY 2014

ELEV 15	THRE 12
---------	---------



CATEGORY	A	B	C	D
RNP 0.11 DA		490-1½	478 (500-1½)	
RNP 0.30 DA		549-1¾	537 (600-1¾)	

### AUTHORIZATION REQUIRED

# RNAV (RNP) RWY 19